

eSOFTakeoff™

eSOFTakeoff™ represents the cutting edge of technology in Takeoff Software from Roctek. It is based upon and is a subset of the advanced digitizer-less SOFTakeoff® program. With the increasing availability of blueprints in electronic format, eSOFTakeoff™ allows you to perform quantity takeoffs using your mouse directly on the screen instead of using a digitizer board and paper prints.

eSOFTakeoff™ allows import of a wide variety of image formats. The program is designed to run on Microsoft's WINDOWS® platforms, allowing the user to perform length, area, count, separate length and pitched measurements, in multiple independently controlled layers. It has powerful configurable export capabilities into Excel® and other Windows® programs. The program includes **SMARTPlots™**, a set of functions that further simplify takeoff measurements.

eSOFTakeoff™ uses a drawing on the screen and allows measurements to be performed on a transparent layer on top of this drawing. Much like a program that utilizes a digitizer and a scaled drawing, eSOFTakeoff™ requires some scaled image to be loaded for use as the basis for measurement. You can pan and zoom into desired areas of the drawing to perform measurements.

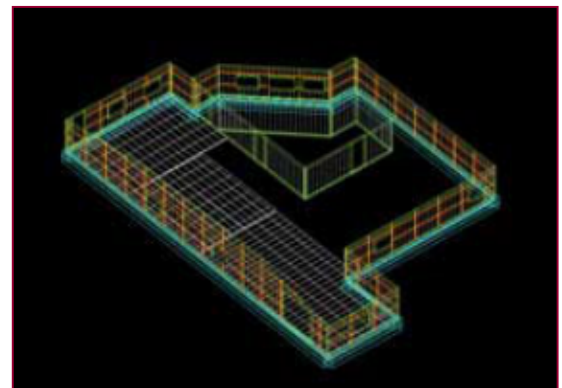
Users will be working with an electronic or "**SOFT**" copy of a building plan as the basis for their takeoff. Hence the name eSOFTakeoff™.

You can also create and use your own plan outlines on one of the layers and use it as a drawing. See **SMARTPlots™** for some tools that will help you to create your own outlines.



Key Benefits of eSOFTakeoff™

- No Digitizer
- Low Cost - allows takeoff product to be expensed to first project.
- Productively quickly for practically any construction trade.
- Speed - estimating man-hours decrease by 40% - 80%.
- Productivity - increases award to bid ratio.
- Accuracy - reduce "waste factor" to bids.



eSOFTakeoff® users can upgrade to the full-featured SOFTakeoff® product, which includes advanced routines for walls, concrete structures, roofing, lumber, tiles, carpets, etc.

ROCTEK International Corporation

Corporate Office (US): Lakeshore Business Center
5200, NW 33rd Ave. Suite 211, Ft.Lauderdale, FL 33309
(800) 826-7763 (954) 777-3988