

PRESTTO™ for General Construction, provides you with an economical yet professional Takeoff System. **PRESTTO™** is quick and easy to learn and will save you time and money immediately.

PRESTTO™ measures areas, lengths, separate line segments and counts items. It is fast, reliable, and above all accurate.

PRESTTO™ can provide solutions for all your quick takeoff needs. No training classes, no other programs to purchase.

PRESTTO™ is Fast, Stable, and user-tested. Roctek software does not need another program such as Excel in which to operate.

PRESTTO™ lets you export your quantities to any Windows® application, spreadsheet, or estimating program such as Excel or use the answer sheet and built in report that comes standard with every license of **PRESTTO™**

Routines for:

- AREA
- LENGTH
- COUNT
- SEPARATE LINE SEGMENTS
- LAYER FUNCTIONALITY

FEATURES USUALLY FOUND ONLY IN HIGHER PRICED SYSTEMS:

- EXPORT DIRECTLY TO EXCEL
- FLOATING TOOL BAR
- USER CONFIGURED GRAPHICS
- PRINTABLE FONTS AND TEXT

- WinScale™

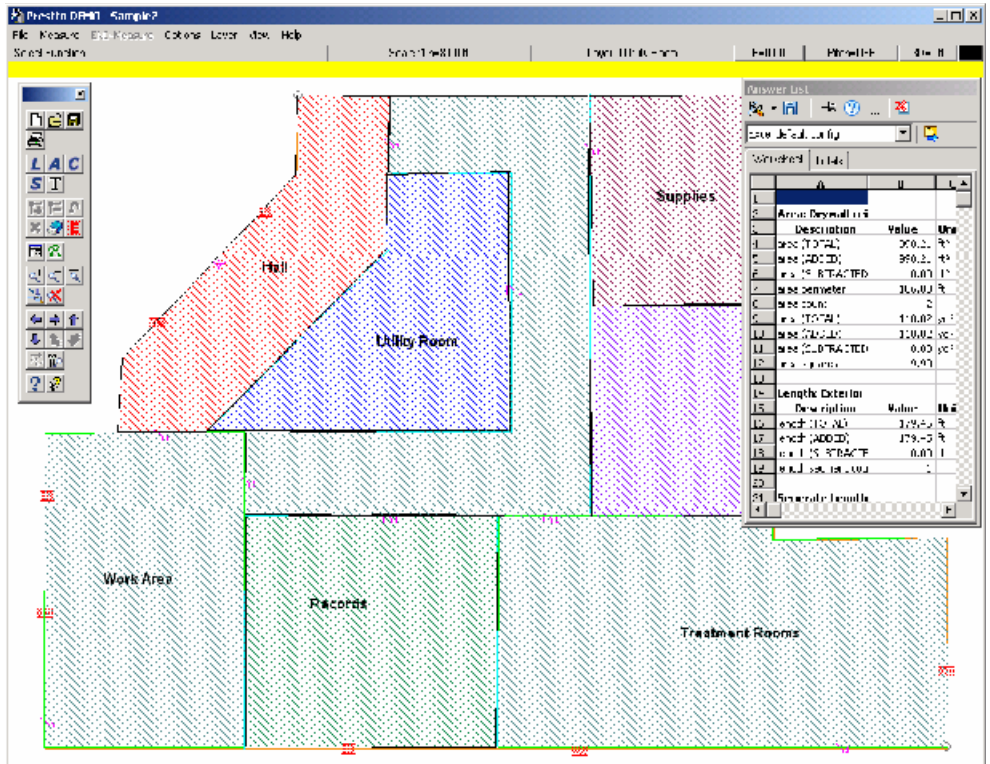
- WinEx™

- WinEx Pro™

- SOFTakeoff™

- **PRESTTO™**

- Low Cost - can be expensed on first project
- Easy to learn - productive in minutes
- Export quantities directly to Excel or any Windows Spreadsheet program
- FAST Routines for Area, Length, Count , Separate Line Segments and Layers
- User configured Graphics with printable fonts and text
- Easily perform takeoffs like a pro
- Layers, Fill Patterns, Place Text and more



Simplifies complex takeoffs while running fast and accurately

Export to any Windows spreadsheet application such as Excel or your favorite Estimating program

PRESTTO™ for Quick & Accurate Takeoffs

Measure Routines	Description
Length	The Length command allows you to measure the length of continuous line segments on the plans—straight or curved.
Area	The Area command allows you to measure the enclosed area and perimeter length of regions on the plans.
Count	The Count Units command allows you to quickly count the number of units of an item on the plans
Separate Lengths	The Separate Lengths command allows you to quickly measure the total length of separate straight line segments on the plans

Look at what you get with PRESTTO

- User Configured Graphics including choice of colors, line thickness, & text
- Layer function to compartmentalize detailed drawings for clearer viewing
- Floating toolbar for perfect placement, out of the way of your takeoff
- Easily Export to Excel and any Windows Spreadsheet or Estimating program
- Uses any WinTab Driver Digitizer
- Easily UPGRADABLE to WinScale
- Perform accurate takeoffs in minutes

The screenshot shows the PRESTTO software interface. The main window displays a floor plan with several rooms highlighted in different colors and patterns: Hall (red), Utility Room (blue), Supplies (purple), Work Area (green), Records (green), and Treatment Rooms (green). The software interface includes a menu bar (File, Measure, END Measure, Options, Layer, View, Help), a toolbar, and a status bar (Scale: 1 in=8.00 ft, Layer: 0 Utility Room, E=0.00, Fitch=CFF, 3D=off). An 'Answer List' window is open on the right, showing a table of calculated values for area and length.

Area: Drywall cel	Description	Value	Unit
area (TOTAL)		990.21	ft ²
area (ADDED)		990.21	ft ²
area (SUBTRACTED)		0.00	ft ²
area perimeter		116.01	ft
area count		2	
area (TOTAL)		110.02	yd ²
area (ADDED)		110.02	yd ²
area (SUBTRACTED)		0.00	yd ²
area squares		0.01	

Length: Exterior	Description	Value	Unit
length (TOTAL)		170.15	ft
length (A) (X-1)		170.15	ft
length (Y) (INTRACT)		0.00	ft
length segment count		1	